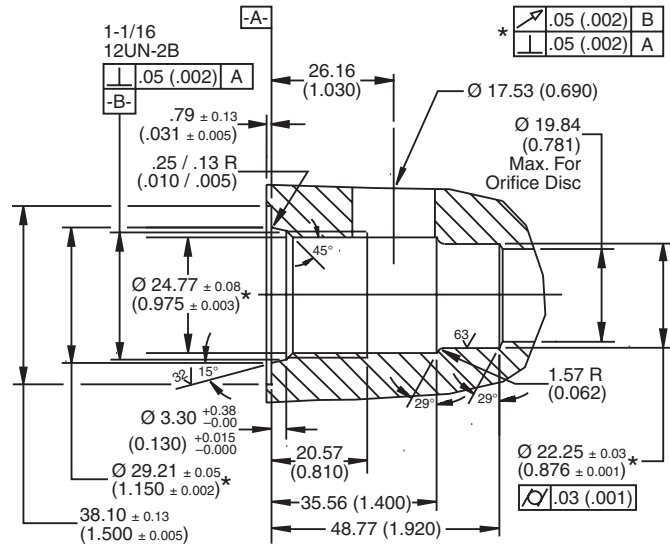
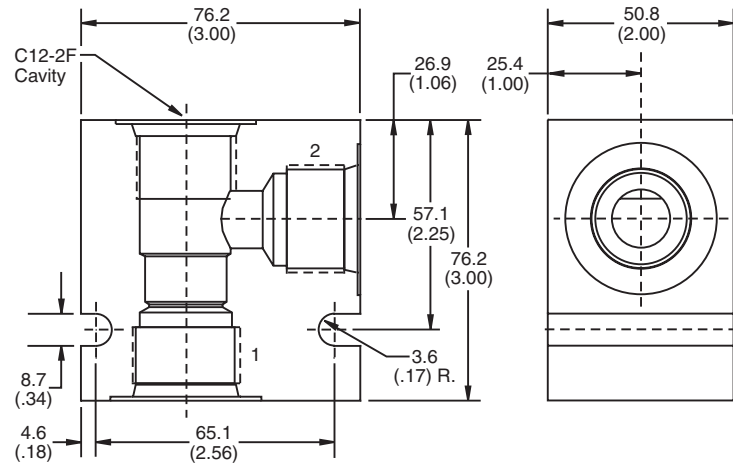
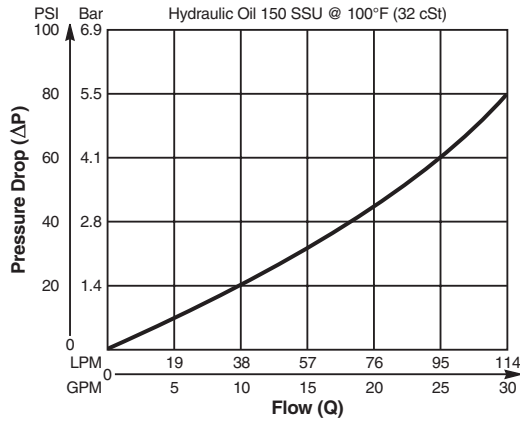


- CV**
Check Valves
- SH**
Shuttle Valves
- LM**
Load/Motor Controls
- FC**
Flow Controls
- PC**
Pressure Controls
- LE**
Logic Elements
- DC**
Directional Controls
- MV**
Manual Valves
- SV**
Solenoid Valves
- PV**
Proportional Valves
- CE**
Coils & Electronics
- CB**
Cartpak Bodies
- BC**
Bodies & Cavities
- TD**
Technical Data

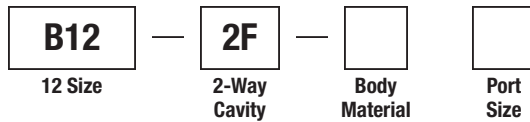
Dimensions Millimeters (Inches)



Performance Curve
Pressure Drop vs. Flow



Ordering Information



Code	Body Material
Omit	Steel
A	Aluminum

Code	Port Size
12T	SAE - 12

Form Tool: Rougher None
 Finisher NFT12-2F
Weight: .30 kg (.65 lbs.)